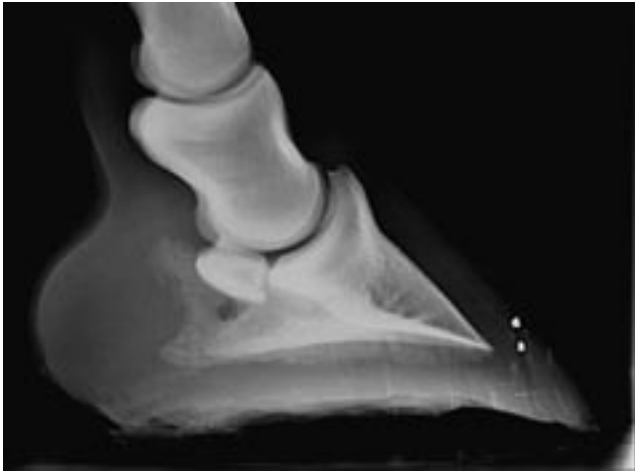


Case Study Using Jim Blurton Graduated Bar Shoes



The latero-medial x-rays that were taken clearly identify the extent of the rotation of the coffin joint and compression of the joint area surrounding the extensor process. To enable counter rotation we initially decided on a graduated heel lift.

As with all cases of reverse rotation caudal heel support is vital in supporting the coffin joint at the optimum weight bearing phase of the stride.



Therefore it is essential to incorporate a form of bar shoe protecting the caudal aspect of the ground bearing surface of the foot, and as a result a Graduated Bar Shoe number 1 was fitted.



When dealing with a fore limb broken back hoof pastern axis such as this it is important to remember that the coffin joint will require further dynamic stability.

To achieve this Vettec sole pack material was applied to the caudal aspect of the foot to further support the joint in the stance phase.

